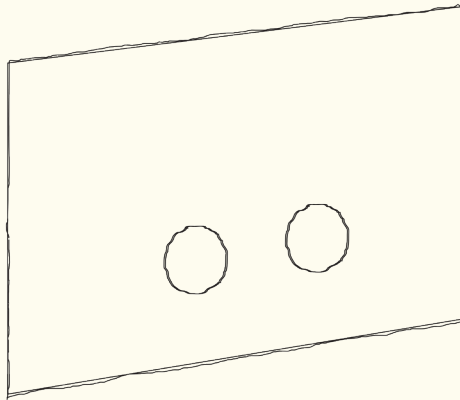


Dual Flush Plate

Product shown will vary depending on model



Important information:

To ensure this product is installed properly you must read and follow these guidelines.

The owner/user of this product must keep this information for future reference.

This product must be installed by a professional licensed contractor.

Only use a strap wrench or protected smooth jaw on any finished surface.

ORE

Guarantee and Aftercare

When installing or using tools, extra care must be taken to avoid damaging the finish or fitting. To maintain the appearance, please ensure it is cleaned regularly using a clean soft damp cloth only. Abrasive cleaners or detergents must not be used as they may cause surface deterioration. The company provides a guarantee against faulty material or manufacture excluding serviceable parts, providing they have been installed, cared for and used in accordance with our instructions.

More information on our Warranty and Aftercare can be found on our website.

The company reserves the right to continually evolve its product lines without notification.

The company will not accept any liability regarding specification changes and their consequences unless previously quoted by the company in writing.

Installation Procedure

Please Note: These instructions refer specifically to the installation of the Dual Flush Plate onto the Cistern.

Care should be taken to ensure cistern compatibility with this product.

1. Ensure you have all the relevant tools before commencing the installation and take note of any specific markings on the product to make sure that they are installed correctly.
2. Remove any protective casing/film on the cistern unit (steps 1,2).
3. Screw plugs into the appropriate hole using the relevant tool (step 3).
4. Screw the Back Plate of the Dual Flush unit into place (step 4).
5. Cut the push rods to the desired length, taking note of the length from the surface of the back plate to the tip of the rod (16mm, step 5).
6. Position and fix the front panel of the Dual Flush unit onto the back plate of the Dual Flush unit, ensuring correct alignment (arrows) of internals (step 6).
7. Check for smooth and correct operation of the Dual Flush Plate buttons.

COMPATIBILITY: FOR WC (ITALY)
 GEBERIT UP720/UP320 since 2010

Sigma: 8cm 109.790.00.1

Sigma: 12cm

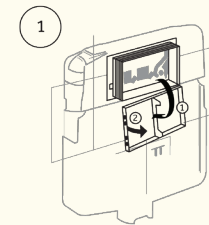
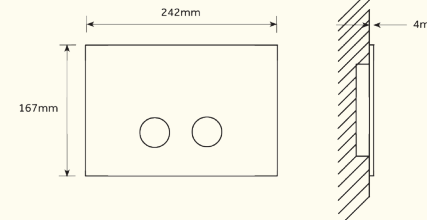
Duofix: 111.374.00.5 Kombifix: 110.374.00.5

11.350.00.5 110.793.00.1

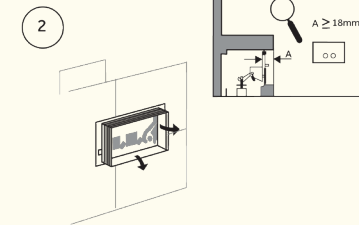
11.370.00.5

111.375.00.5

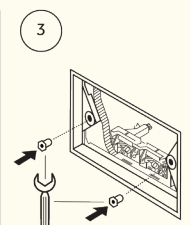
111.791.00.1



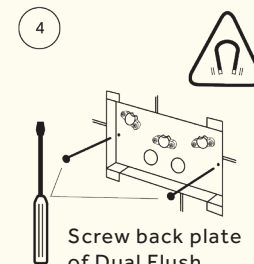
1
 Remove the protective casing/film



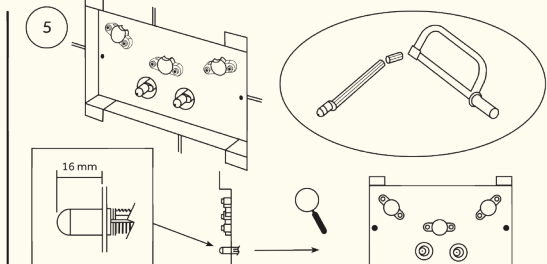
2
 Remove the additional protective casing/film from the sides



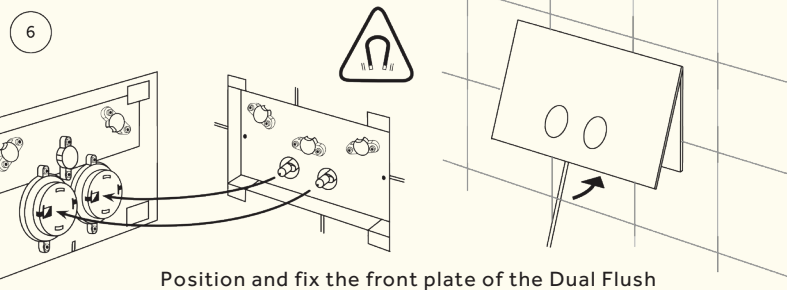
3
 Screw bushings/plugs into the appropriate hole



4
 Screw back plate of Dual Flush into place



5
 Cut push rods to desired length and fit into place



6
 Position and fix the front plate of the Dual Flush unit onto the back plate, ensuring correct alignment (see arrows).

Dimensions in mm

INSTALLER DETAILS:

ORE