

67
V4

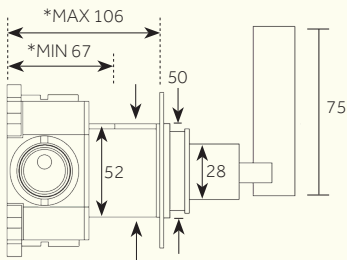
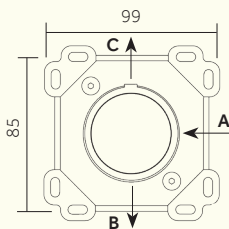
PRODUCT NAME

Chapter One - Wall Mounted Two Ways Diverter - V4

INTERNAL FIRST FIX: TM1HDIVIP-V5

Studio/ ORE

**Min Max distances between
centre of outlet/inlet
& finished surface of wall*



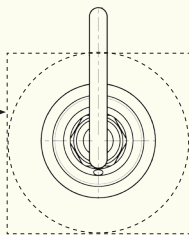
Recommended Max cut out 55 mm

- A:** G3/4" WATER INLET
- B:** G3/4" WATER OUTLET
- C:** G3/4" WATER OUTLET

Back Plate Options:

SQ / CR: 75 mm

SQ / CR: 100 mm



*For min/max operating pressures, flow rates (Litres/min) and connection information,
please see reverse for details.*

*Dimensions in mm. Further installation instructions available as a downloadable PDF
on the product page of our website.*



Studio/ ORE

PRODUCT NAME

Chapter One - Wall Mounted Two Ways Diverter - V4

INTERNAL FIRST FIX: TM1HDIVIP-V5

Min/Max Operating pressure: (bars)	0.5 - 6.0						
Flow rates: Bar/L per min (OUTLET 1)	0.5 / 15.7	1 / 21.7	2 / 30.6	3 / 37.6	4 / 43.5	5 / 46.8	6 / 46.8
Flow rates: Bar/L per min (OUTLET 2)	0.5 / 15.7	1 / 21.8	2 / 30.2	3 / 37.2	4 / 43.0	5 / 46.81	6 / 46.81
Connection:	3/4" BSP (NPT ADAPTERS ARE INCLUDED)						
Flow Restrictor:	N/A						

For Specifications in mm, please see reverse for details.

Further installation instructions available as a downloadable PDF on the product page of our website.