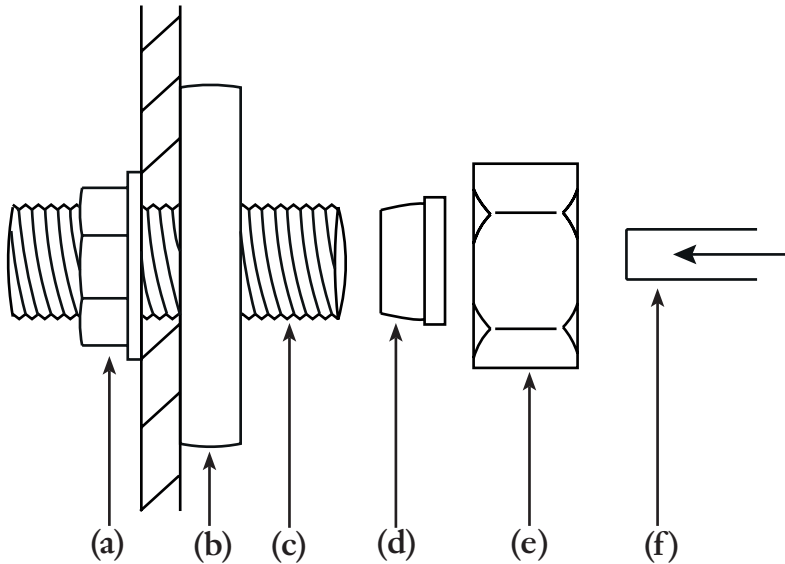


## INSTALLATION

### 3/4 Inlet



- Secure thread (c) to the 3/4 outlet in the wall or ceiling using nut (a) when there is access from behind. Thread (c) can be shortened to your desired length.
  - Thread ring (b) onto thread (c) tightly against the wall or ceiling.
  - Place olive (d) into thread (c) and screw nut (e) down lightly into place. **DO NOT OVERTIGHTEN YET**
  - Once your shower arm (f) has been cut to your desired length, place it through (e), (d) and into (c). Tighten nut (e) until the olive has secured (f) into place.
- IMPORTANT: USE A STRAP WRENCH OR SOFT PLIERS**

**ORE**